

Installation of the wireless network eduroam with Windows Vista (UK). Access to Tilburg University network.

Welcome to the installation guide of the wireless network eduroam. All universities in the Netherlands offer the eduroam network. That means that you can use the internet via the eduroam network when you are at another university in the Netherlands.

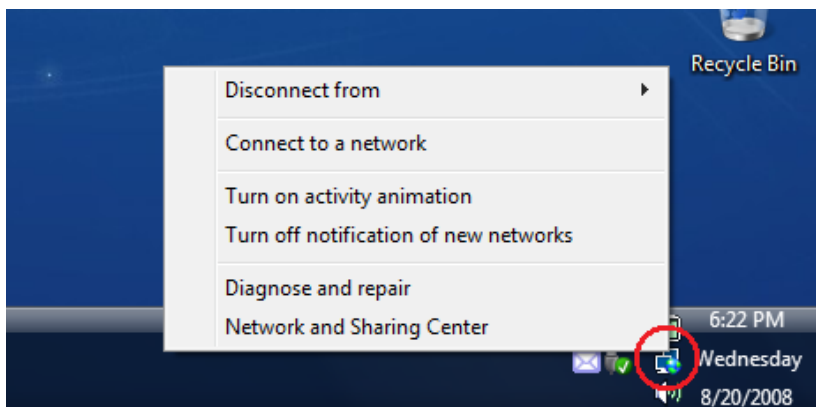
This guide will help you to install the wireless network eduroam step-by-step on your computer with Windows Vista. Also check the [eduroam website](#).

Unfortunately not every university in the Netherlands uses the same wireless settings. This means that you might have to change the way eduroam is configured if you want to use it at another university. You can ask this at the IT helpdesk of the university in question.

Installation of eduroam if you don't study or work at Tilburg University

If you want to use *eduroam* network, you need to configure this network on your laptop. You don't need to install any additional software. You first have to go to the Network and Sharing Center of Windows Vista. There are a couple of ways to go this section of Windows Vista.

- Click with the right mouse button on the *wireless icon* at the bottom-right of your laptop screen, a menu will pop-up.
- In this menu you have to select *Network and Sharing Center*.

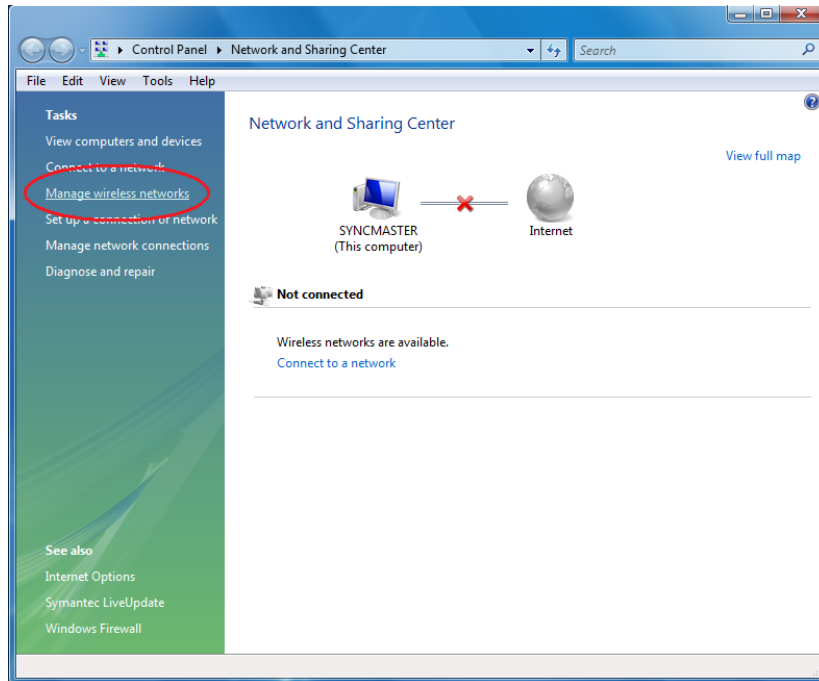


Another way to go to the Network and Sharing Center is to type a command line in either the *Start Search* or *Run...* bar:



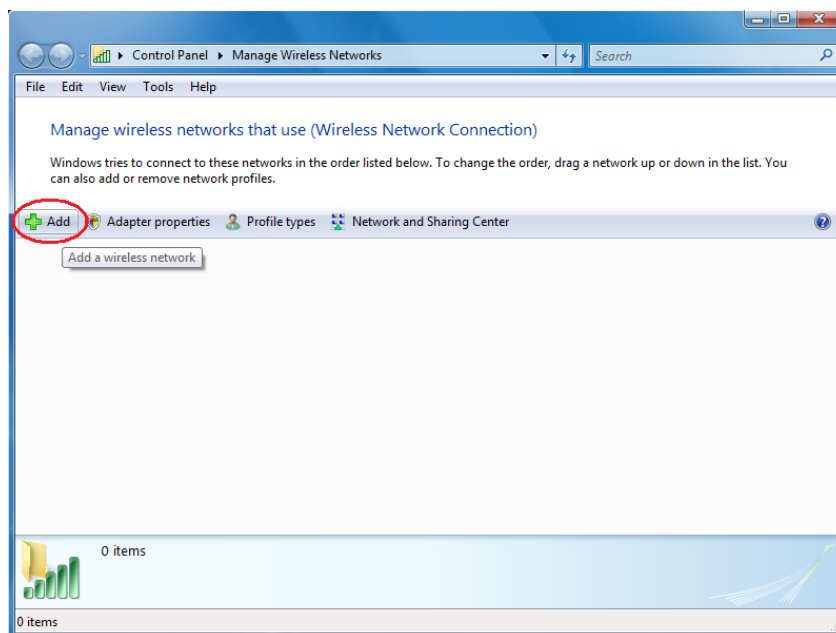
- Click on start,
- Type the following in *Start Search* or *Run...*:
 - `control.exe /name Microsoft.NetworkAndSharingCenter`

After doing one of the above, you will be directed to the Network and Sharing Center:



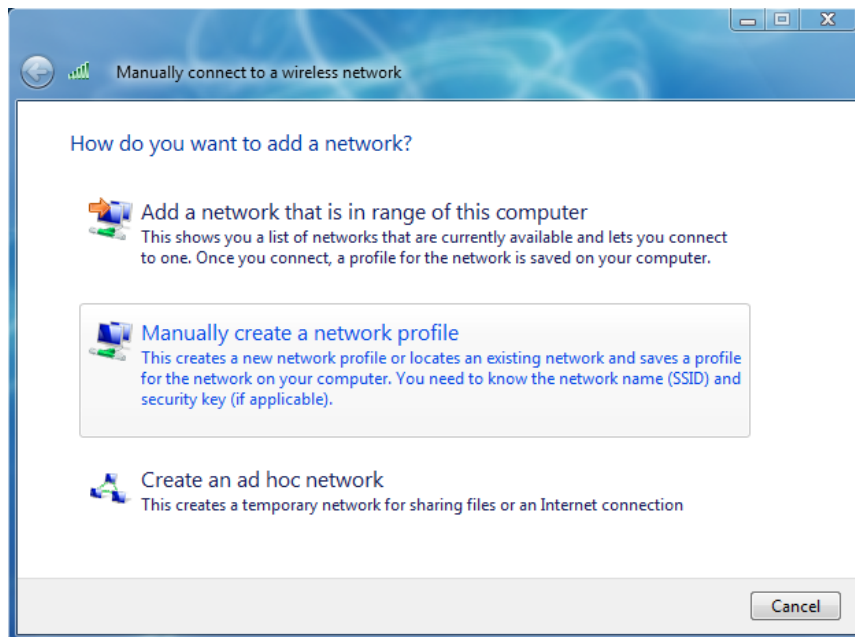
- Click on *Manage wireless networks*.

You will then be navigated to the following page:



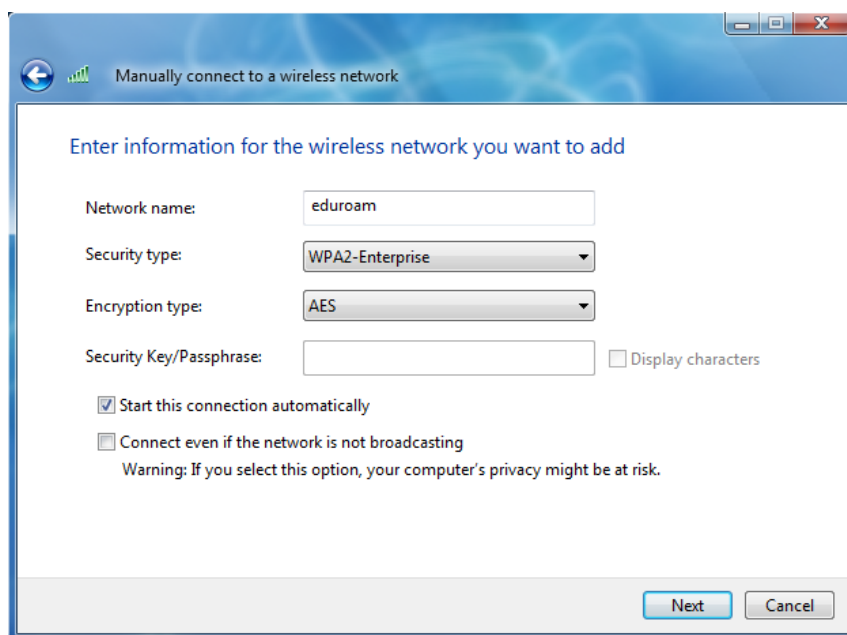
- Click on *Add*.

The following page will then pop-up:



- Click on *Manually create a network profile*.

You will then be directed to the following page:



Here you will have to fill in some information.

- At Network name you need to type *eduroam*.
- The Security type should be *WPA2-Enterprise* with *AES* encryption.
- Make sure that the box *Start this connection automatically* is checked.
- After this click *Next*.
- Fill in your own institute specific settings.