

## Installation of the wireless network eduroam with Windows Vista (UK) for Tilburg University members.

*Welcome to the installation guide of the wireless network eduroam. All universities in the Netherlands offer the eduroam network. That means that you can use the internet via the eduroam network when you are at another university in the Netherlands.*

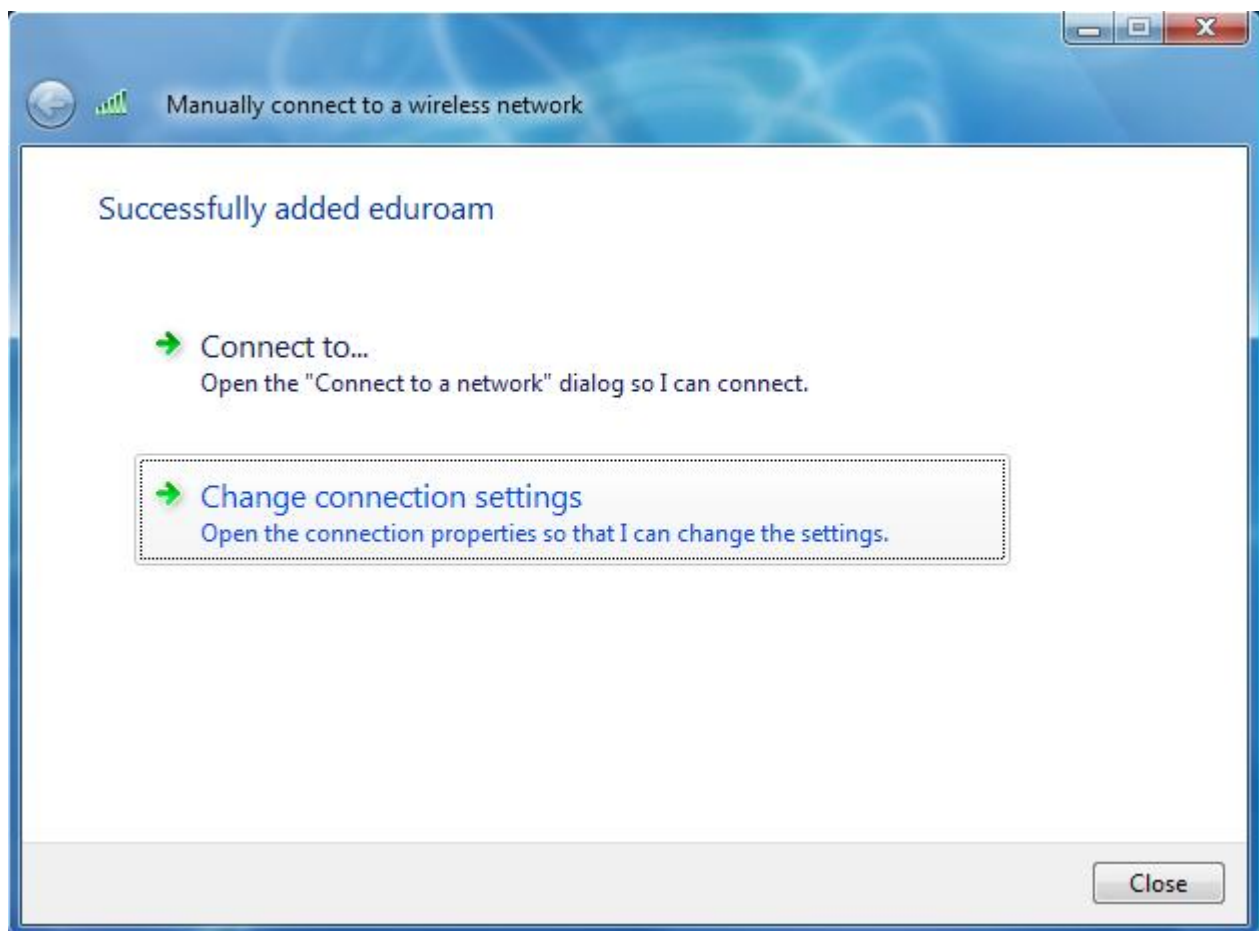
*This guide will help you to install the wireless network eduroam step-by-step on your computer with Windows Vista. Also check the [eduroam website](#).*

*Unfortunately not every university in the Netherlands uses the same wireless settings. This means that you might have to change the way eduroam is configured if you want to use it at another university. You can ask this at the IT helpdesk of the university in question.*

---

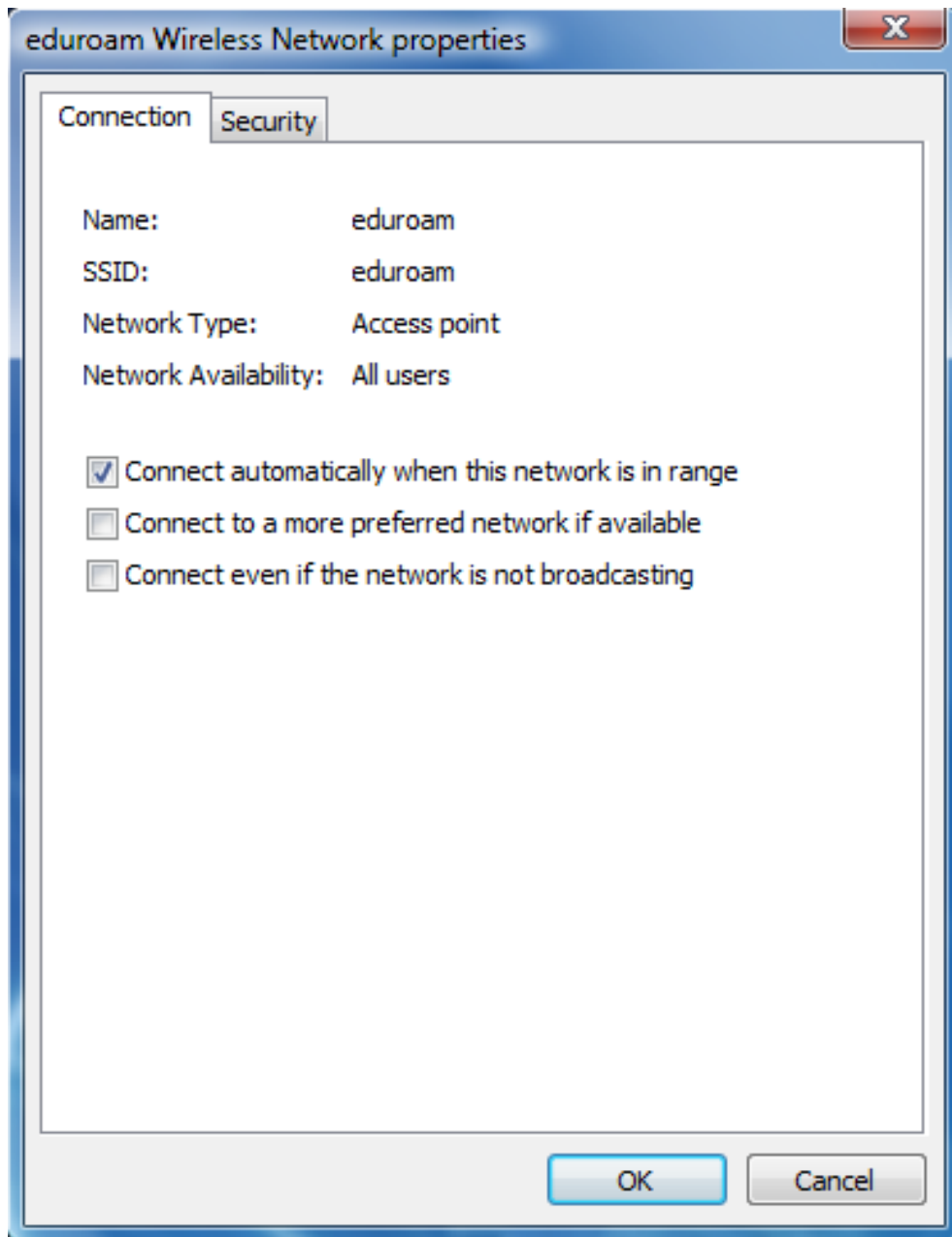
### Installation of eduroam

For the first steps in how to set up an eduroam network connection at another institute, please collect the information at the concerned institute. Consequently, follow the steps below.



- Choose *Change connection settings*.

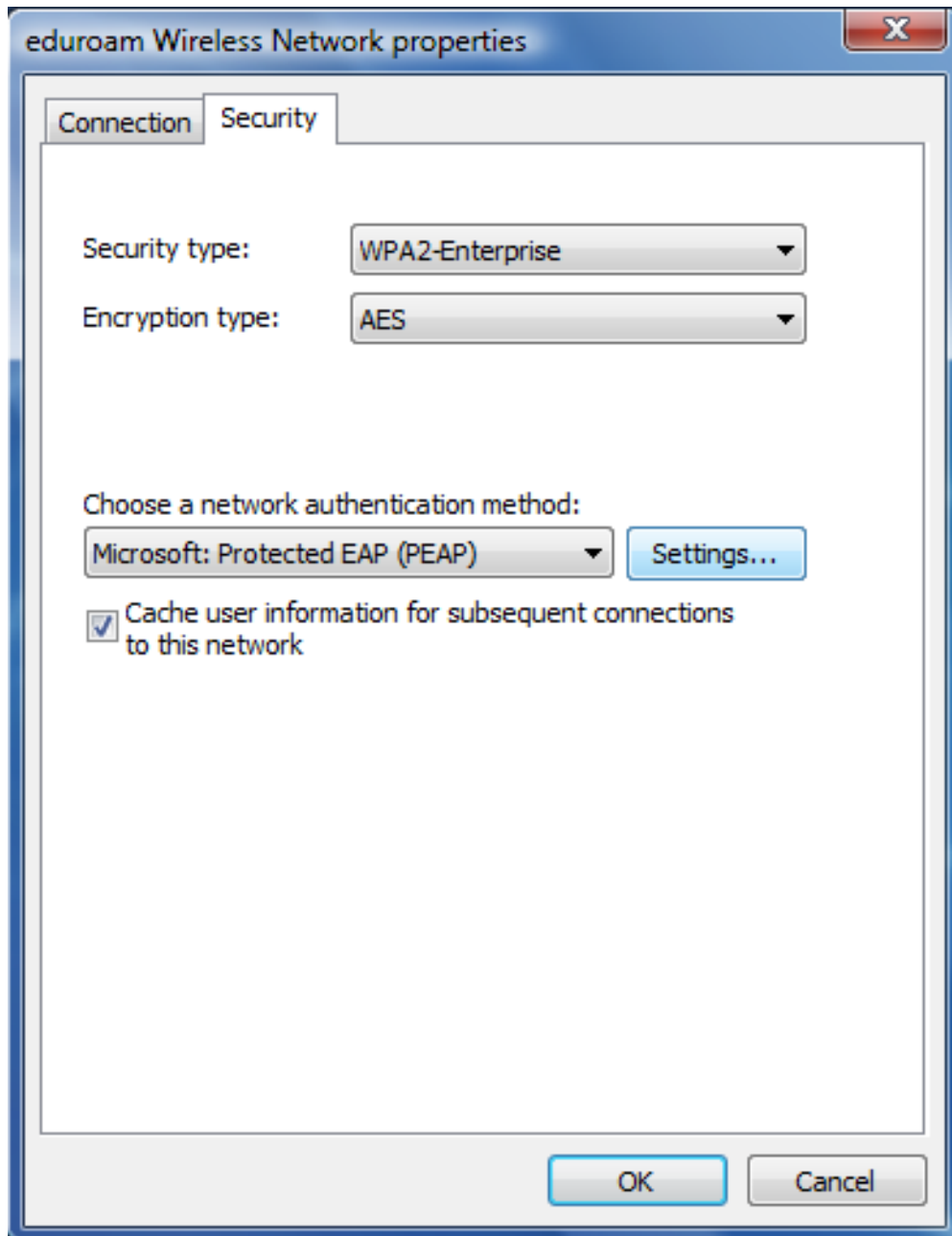
You will then be navigated to the next page:

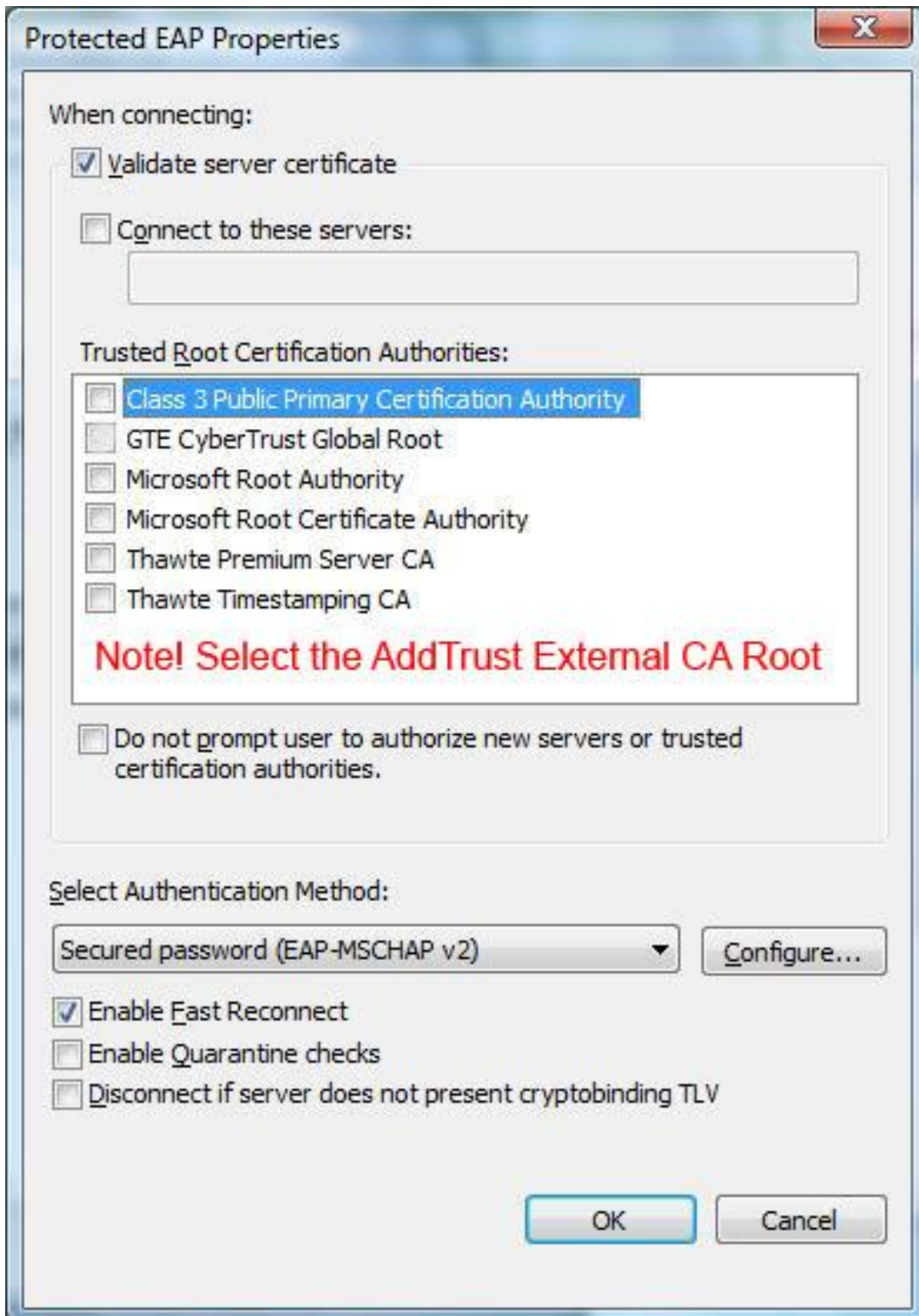


- Make sure that the box *Connect automatically when this network is in range* is checked. You can leave the other boxes unchecked.

- Click on the *Security* tab.
  - Again make sure that WPA2-Enterprise with AES encryption is selected.
  - The network authentication method should be *Microsoft: Protected EAP (PEAP)*.
  - Also make sure that the box with *Cache user information...* is checked.
  - Now click on *Settings*.

The following screen will pop-up:

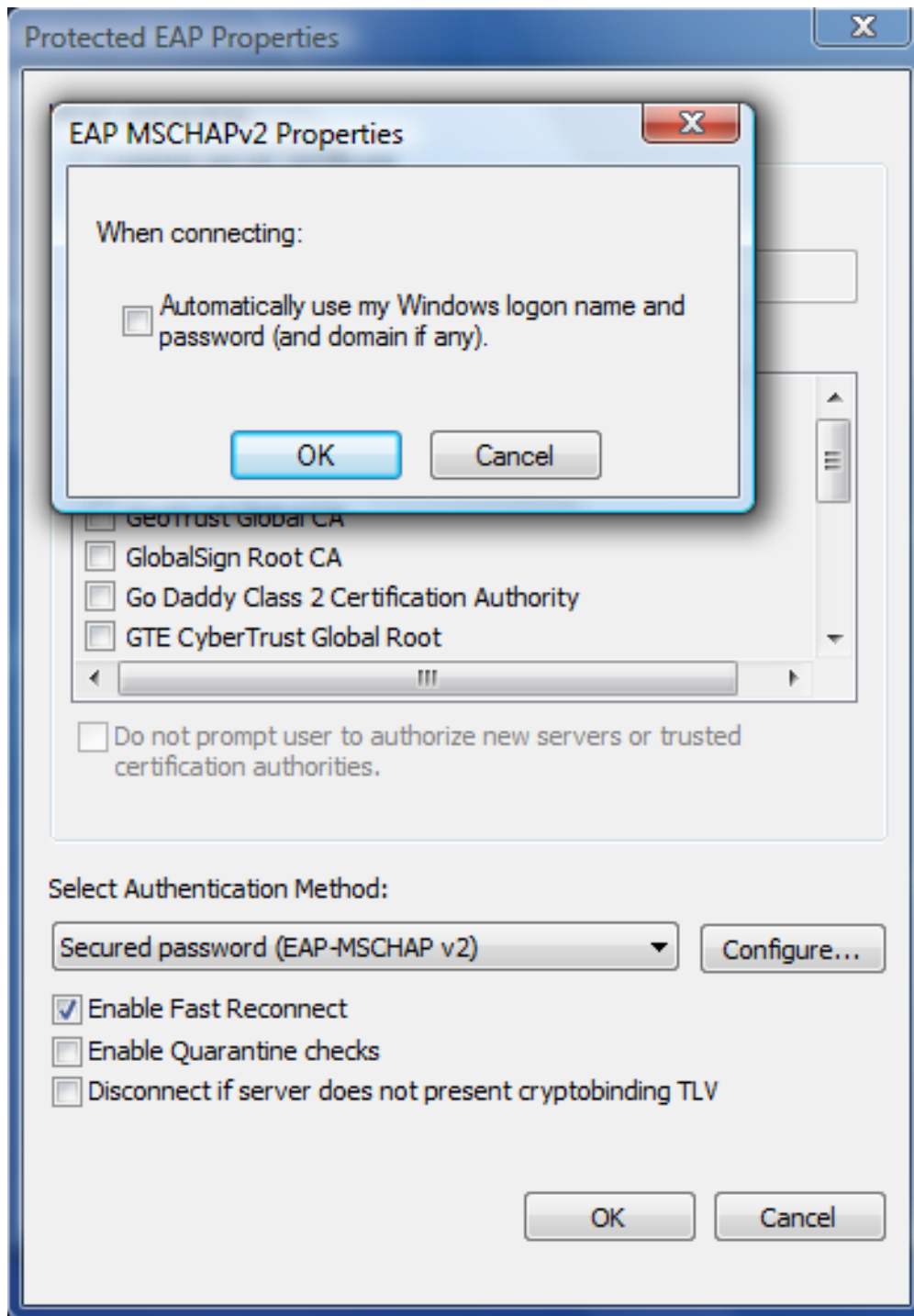




At the top of the page check the box *Validate server certificate*.

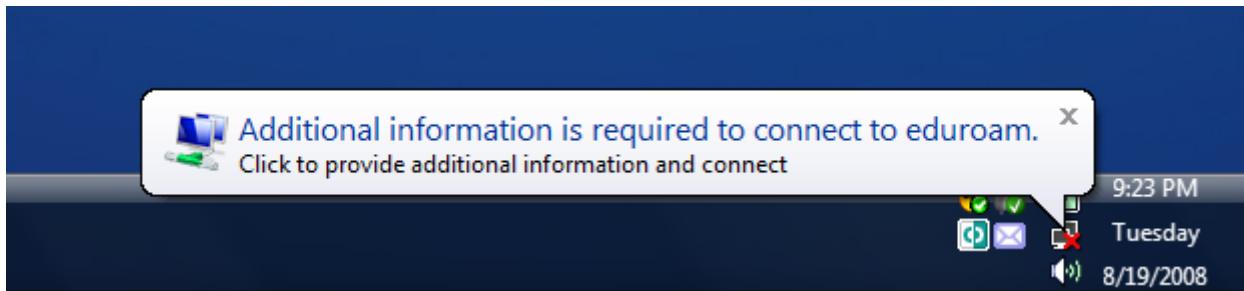
- Check in Trusted Root Certification Authorities *AddTrust External CA Root*.
- Make sure that the box with *Enable Fast Reconnect* is checked.
- *Secured password (EAP-MSCHAP v2)* should be selected
- Then click on *Configure*.

The next pop-up will appear:

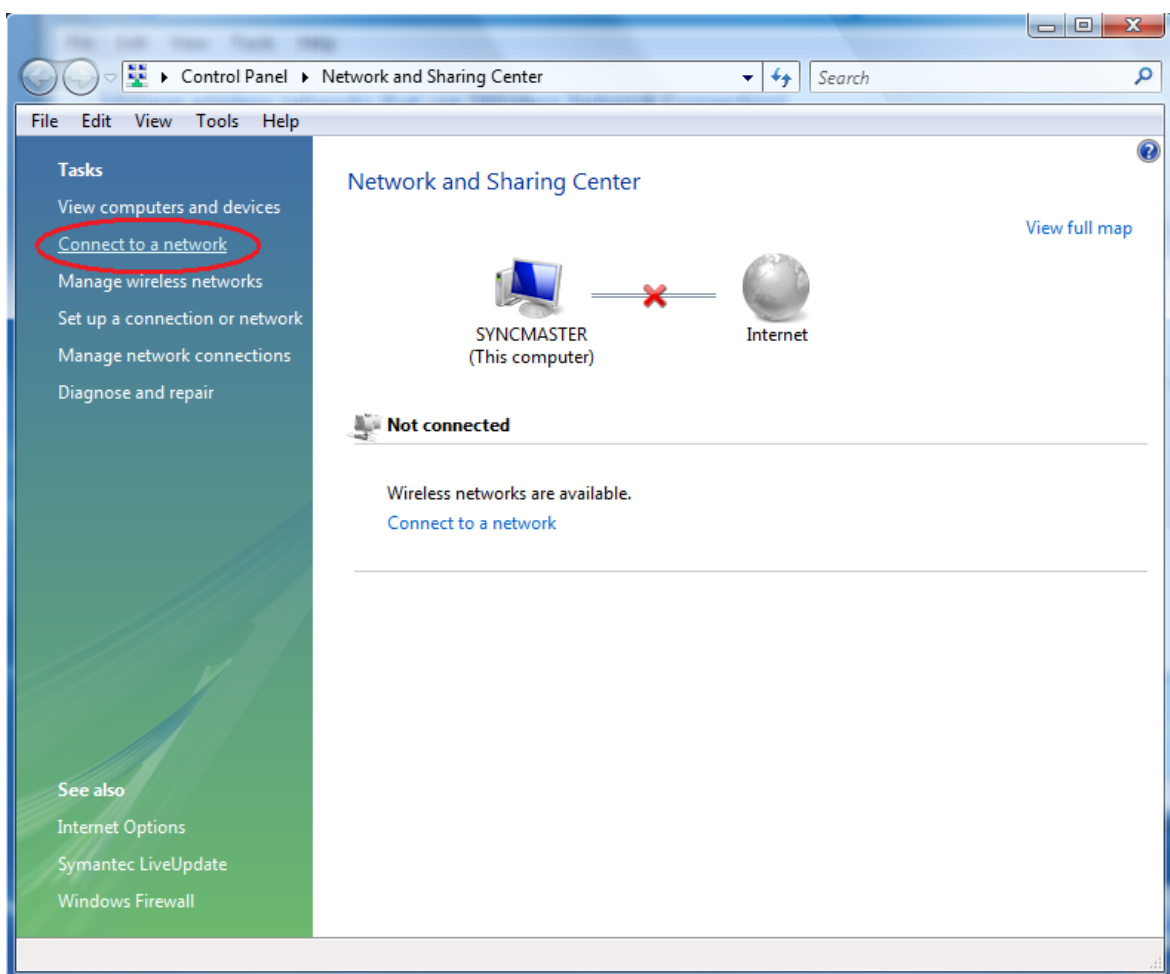


- Uncheck the box with *Automatically use my Windows logon name and...*
- Click on *OK*.
- After that click 2 more times on *OK* and on *Close*.

If everything was configured correctly, you will see a textbox pop-up at the bottom right of your laptop screen:

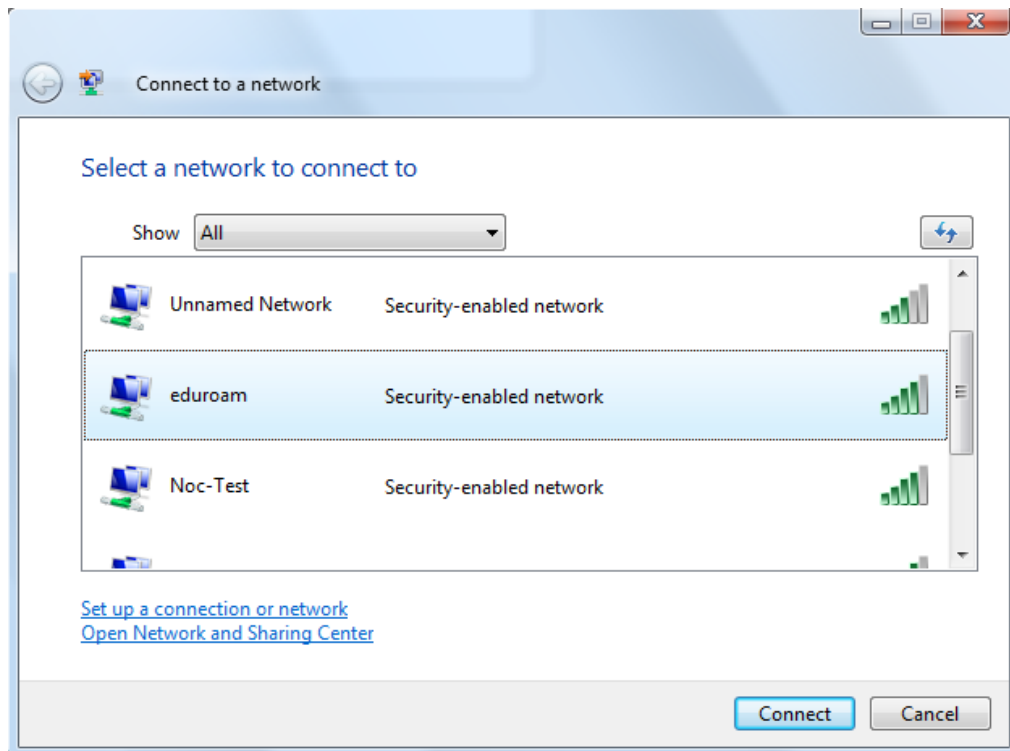


If this text box doesn't appear you have to go back to the Network and Sharing Center:



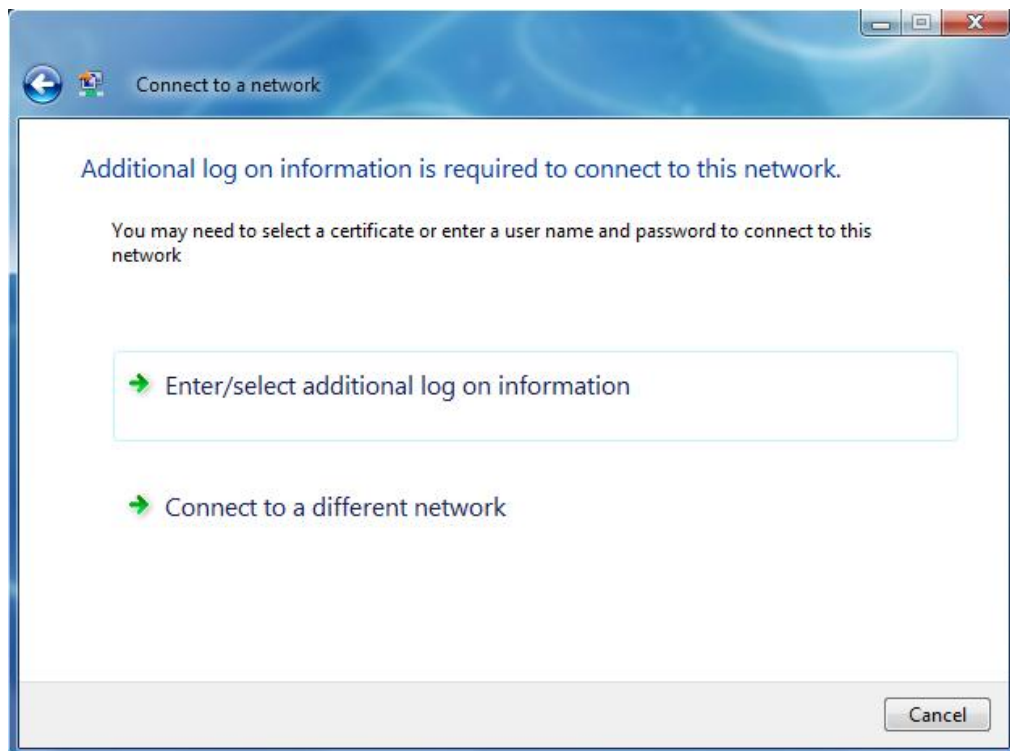
- Click on *Connect to a network...*

The following screen will pop-up:



- Double-click on *eduroam*.

You will then be navigated to the following page:



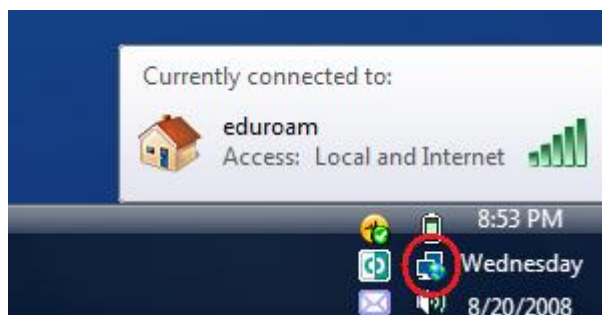
- Click on *Enter/select additional log on information*.

Now you will be directed to the next pop-up:



- Enter your username and password.
- The domain should be *UVT.NL*.
- Click on *OK*.

After about 5 - 10 seconds your connection with the *eduroam* network is established. If you hold your mouse above the following icon (which should look the same as on the picture below) you will see the following:



You have now successfully configured *eduroam* on your laptop. The next time you start your computer at the UvT campus you will be automatically connected with the *eduroam* network. This is the end of the installation guide of the *eduroam* network. If you have any question regarding this guide, you can contact us by e-mail [lis-servicedesk@uvt.nl](mailto:lis-servicedesk@uvt.nl) or by telephone (013-4663111).