

Installation of the wireless network eduroam with Windows XP

Welcome to the installation guide of the wireless network eduroam. All universities in the Netherlands offer the eduroam network. You can use the internet via the eduroam network while you are at another university here in the Netherlands. Unfortunately not every university in the Netherlands uses the same wireless settings. This means that if you want to use the eduroam network at some other university you might have to change the way eduroam is configured. You can ask this at the IT helpdesk of the university in question.

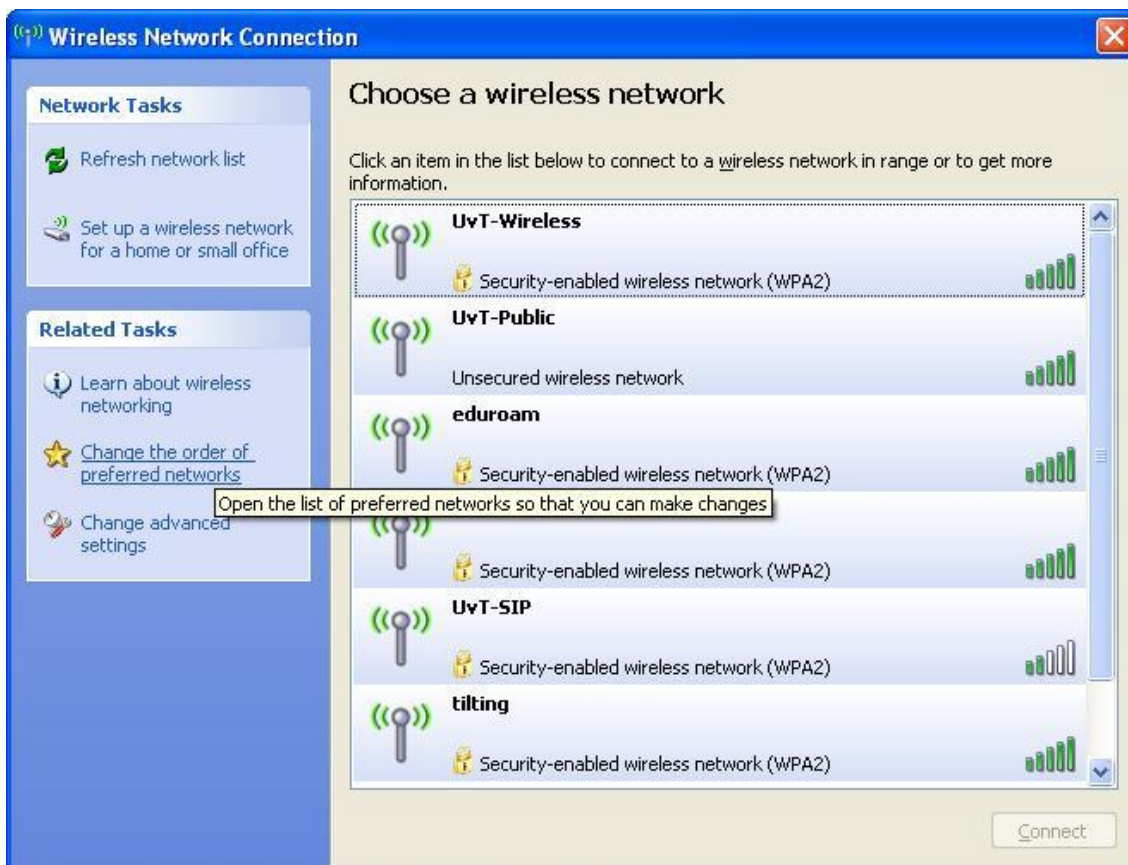
This guide will help you to install the wireless network eduroam step-by-step on your computer. This guide is meant for installing the wireless network eduroam on a computer with Windows XP and Service Pack 3.

Note! It is absolutely important to have Service Pack 3 installed. Without Service Pack 3, it is not possible to install the eduroam wireless network by the manner described in this guide.

See the [eduroam website](#) for more information.

Installation of eduroam

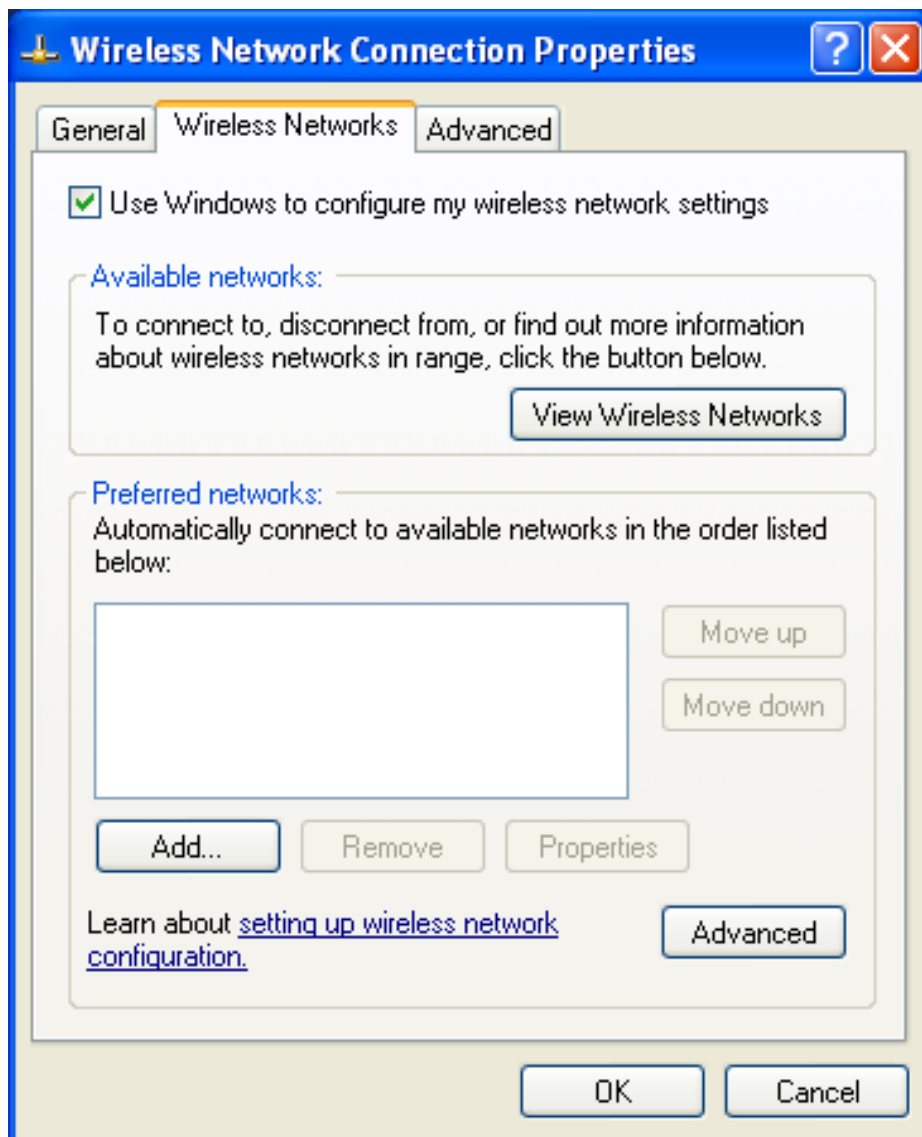
When you open your wireless connection software you will see the following:



In order to use the eduroam network:

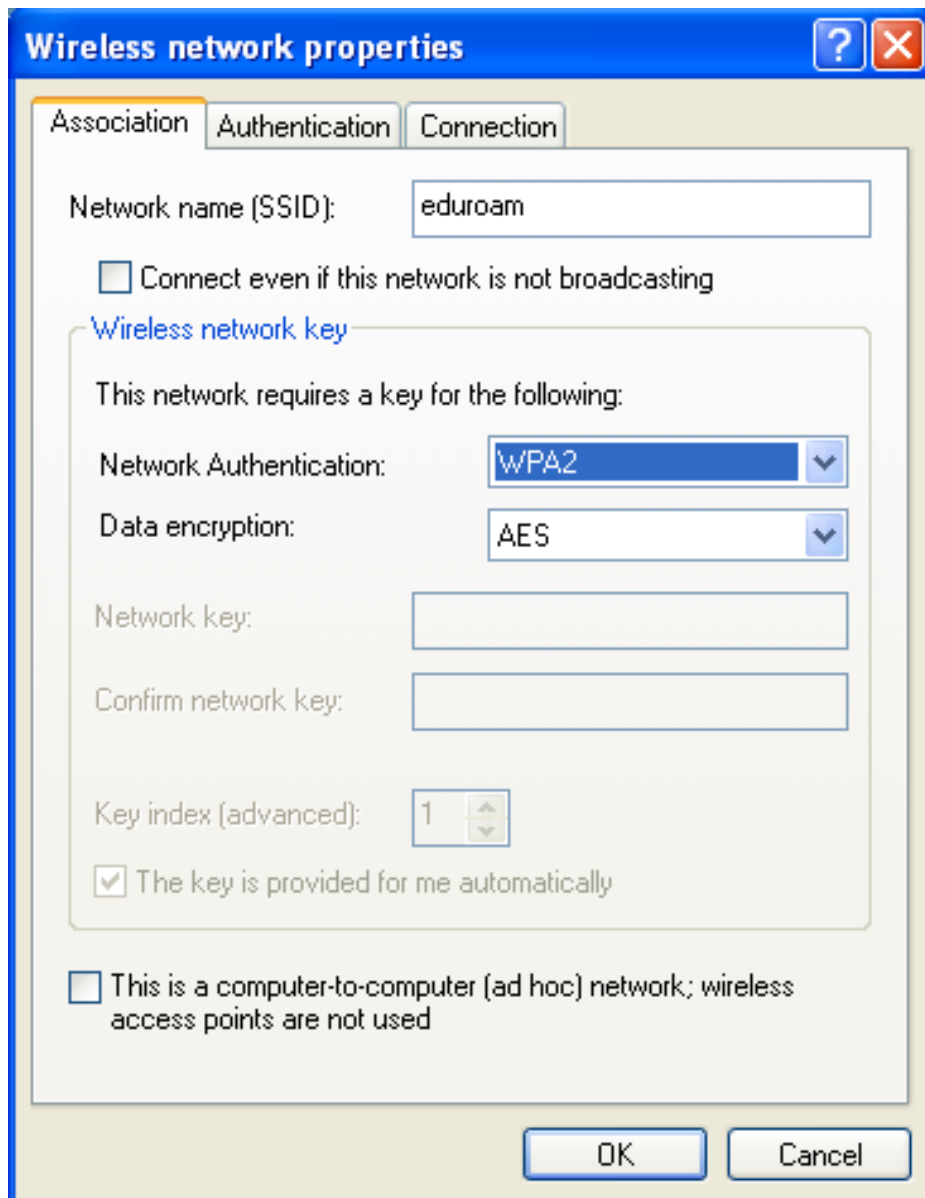
- Click on *Change the order of preferred networks* which is located at the left of the screen.

After clicking on this you will see the following screen:



- Click on *Add....*

You will be navigated to the next screen:



- Enter *eduroam* at the *Network name (SSID)* at the top of the page.
- Change the *Network Authentication* to WPA2
- Also change the *Data encryption* to AES.
- All other boxes should be unchecked.

Now use your own institute specific settings.

