

## Installation of the wireless network eduroam with Windows XP (UK)

*Welcome to the installation guide of the wireless network eduroam. All universities in the Netherlands offer the eduroam network. That means that you can use the internet via the eduroam network while you are at another university in the Netherlands. Unfortunately not every university in the Netherlands uses the same wireless settings. This means that if you want to use the eduroam network at some other university you might have to change the way eduroam is configured. You can ask this at the IT helpdesk of the university in question.*

*This guide will help you to install the wireless network eduroam step-by-step on your computer. This guide is meant for installing the wireless network eduroam on a computer with Windows XP and Service Pack 3.*

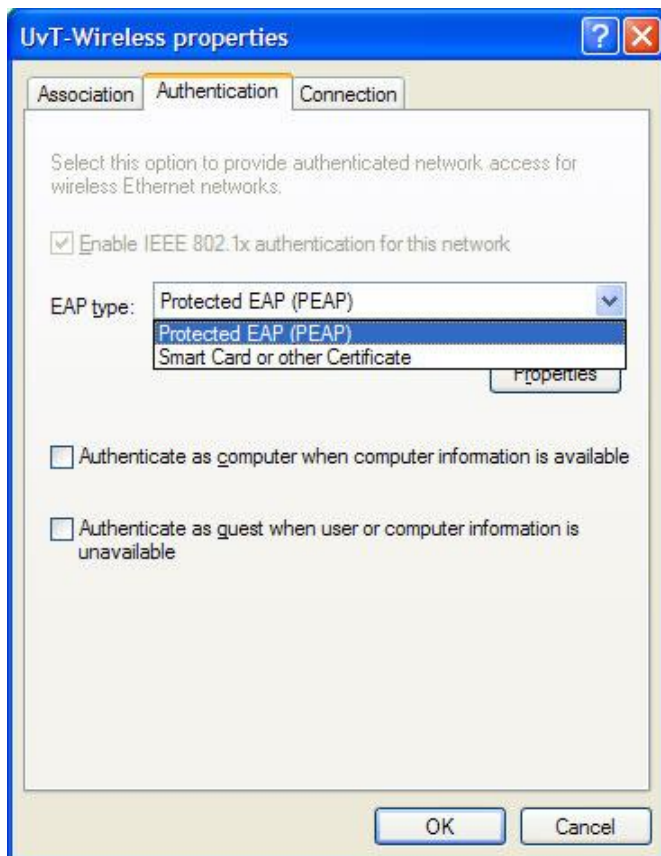
*Note! It is absolutely important to have Service Pack 3 installed. Without Service Pack 3, it is not possible to install the eduroam wireless network by the manner described in this guide.*

See the [eduroam website](#) for more information.

---

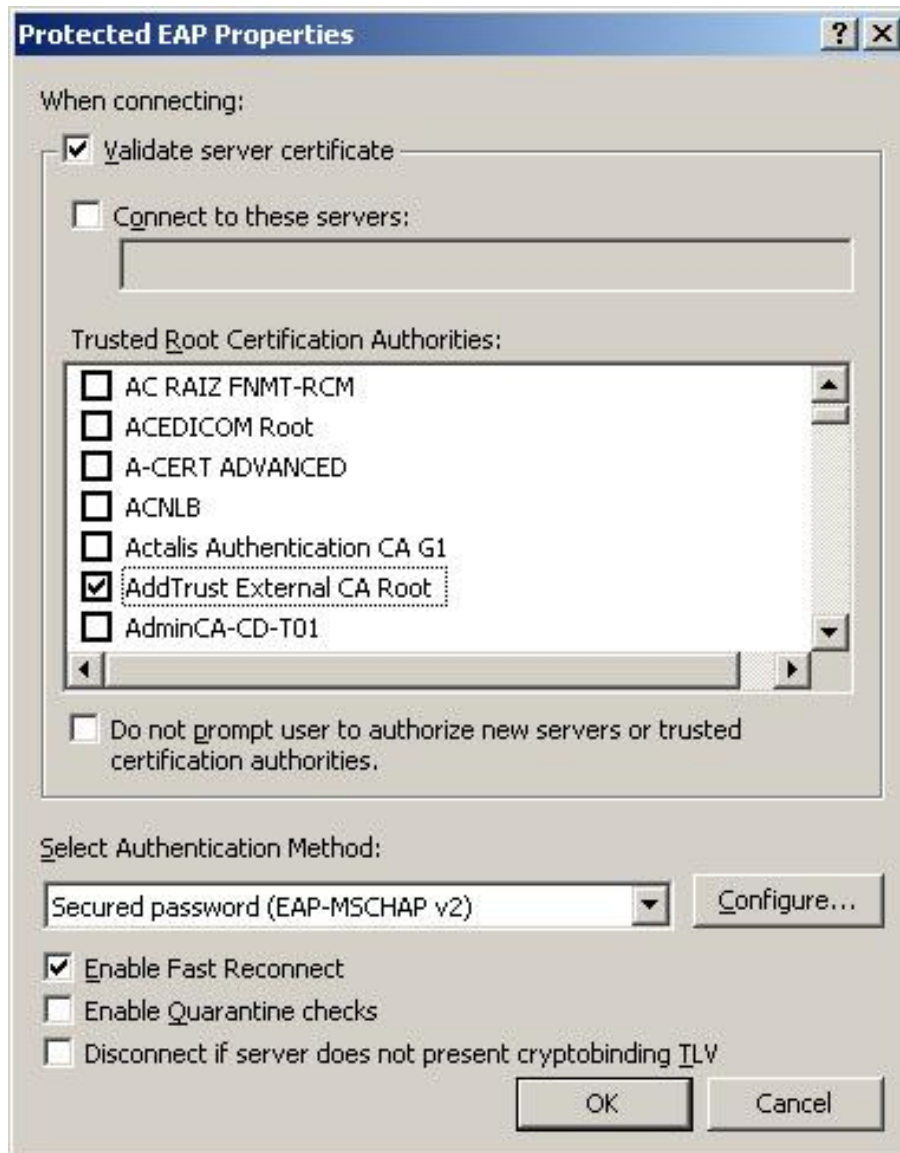
### Installation of eduroam

For the first steps in how to set up an eduroam network connection at another institute, please collect the information at the concerned institute. Consequently, follow the steps below.

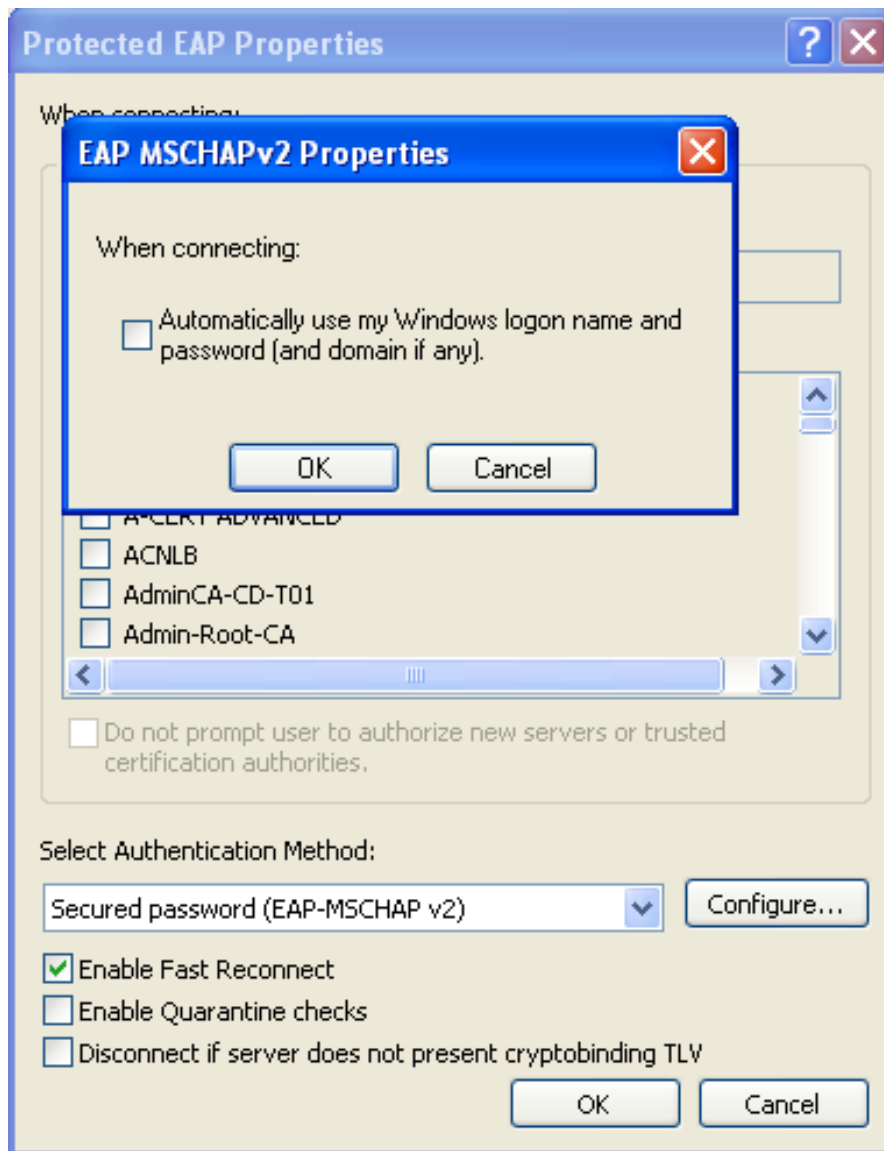


- Click on the *Authentication* tab.
- Here you have to choose the *Protected EAP (PEAP)* at *EAP type*
- After that click on *Properties* (next to Protected EAP).

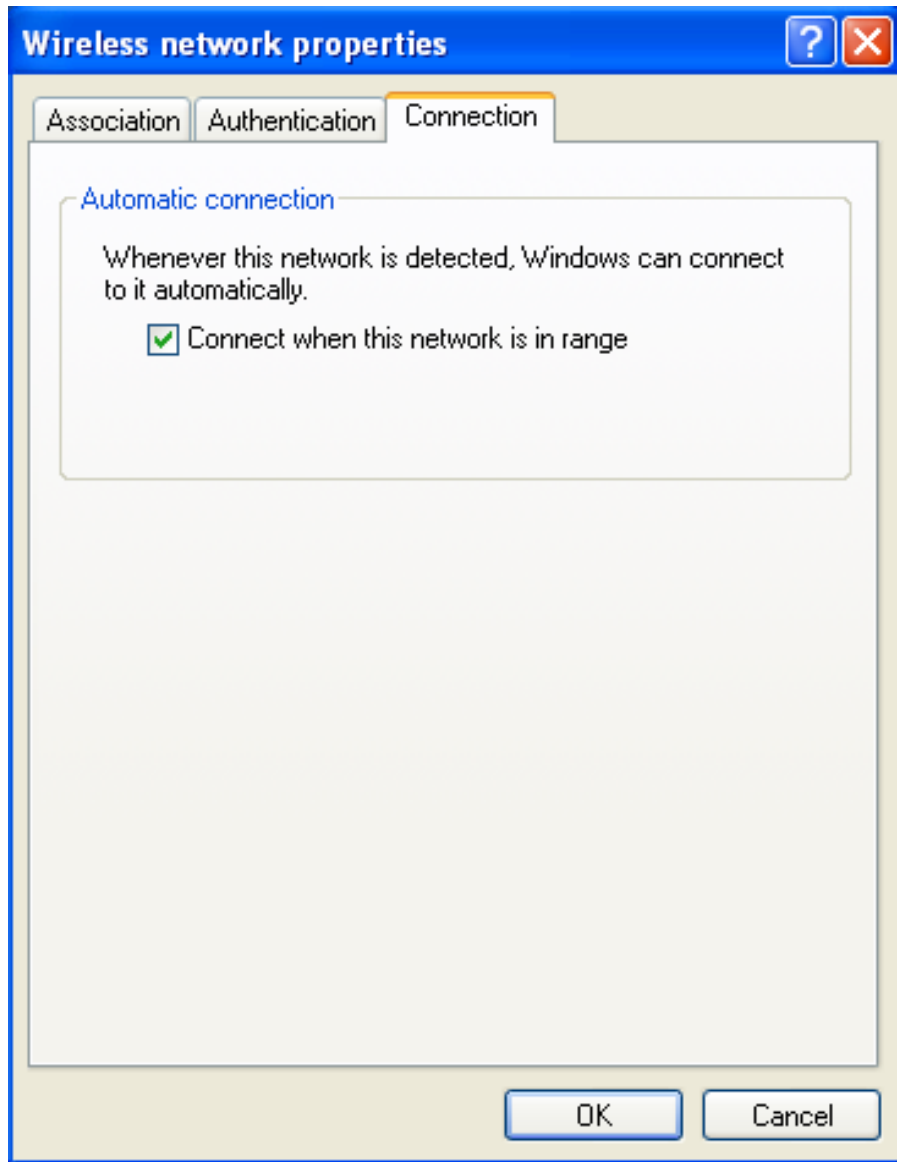
You will then be directed to the following page:



- Check the box *Validate server certificate*.
- Check in Trusted Root Certification Authorities *AddTrust External CA Root*
- Check the box with *Enable Fast Reconnect*.
- Click on *Configure...* (next to Secured password EAP-MSCHAP v2).

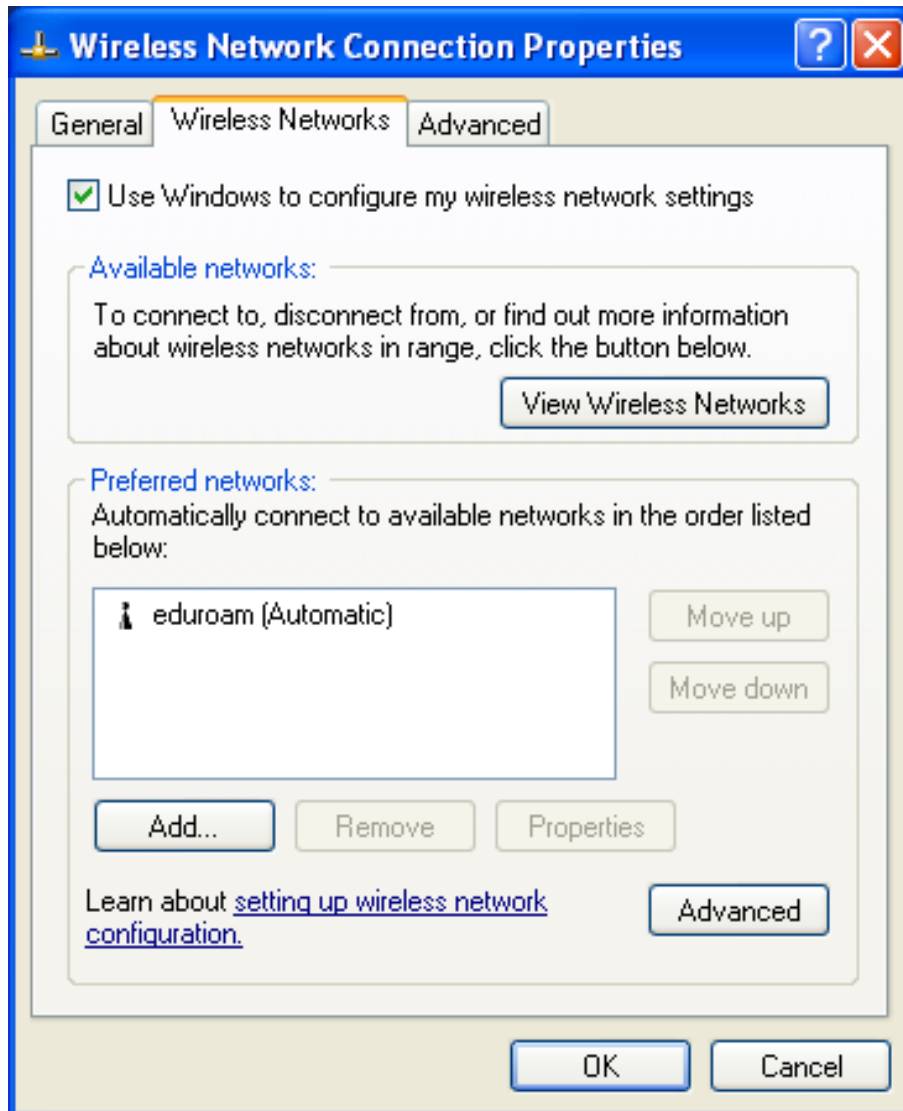


- Uncheck the box *Automatically use my Windows logon name.....*
- Click on *OK*.
- After this go to the *Connection* tab.



- Make sure this box *Connect when this network is in range* is checked.
- After this click on *OK*.

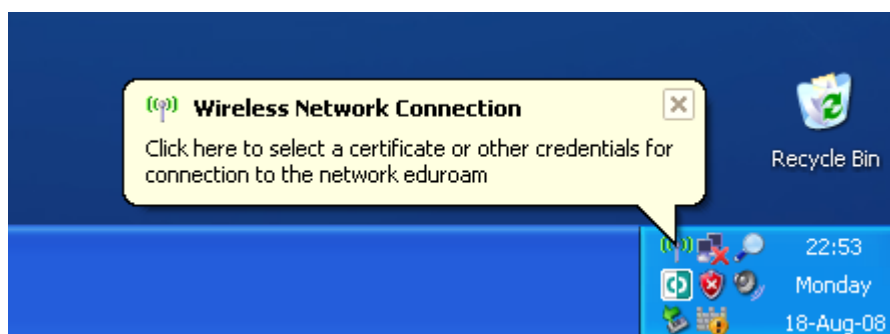
You will then be back at this screen:



Now you will notice that *eduroam (Automatic)* is at the top of the list.

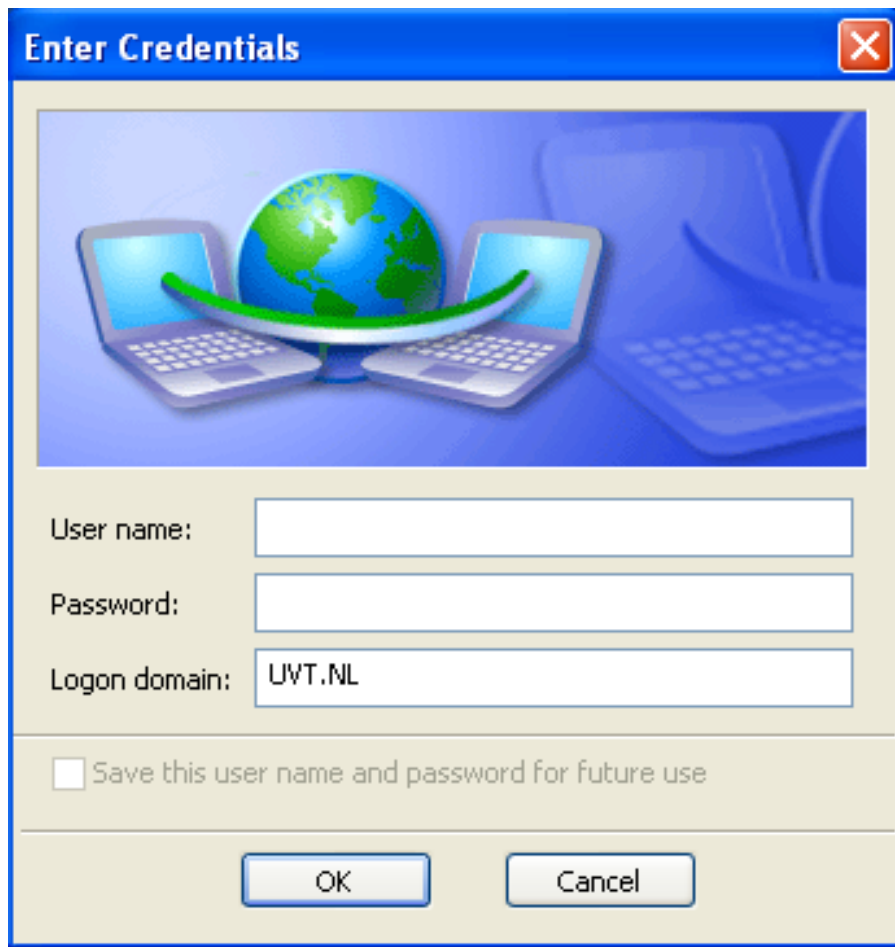
- Click on *OK* again.

After a few seconds you will notice the following box at the bottom right of your laptop screen:



- Double-click on on this textbox.

You will then be directed to the following screen:



Enter Credentials

User name:

Password:

Logon domain:

Save this user name and password for future use

OK Cancel

- Enter your username and password and domain (which is *UVT.NL*).
- Click on *OK*.

After (about) 10 seconds you will be connected to the wireless network *eduroam*.

This is the end of the installation guide of the eduroam network. If you have any question regarding this guide, you can contact us by e-mail [lis-servicedesk@uvt.nl](mailto:lis-servicedesk@uvt.nl) or by telephone (013-4663111).